



2018 Project Review Sheet (2019 Construction)

City Council District 5

Ballot #5J

Project #	18-592
Project Title:	Traffic Calming and Pedestrian Improvements on NE 145th St & 30th Ave NE
Location:	Corner of NE 145th St & 30th Ave NE, especially the SW corner

SDOT Project Summary

SDOT approves project

- Yes
- Yes, with revisions
- No

Comments: SDOT recommends formalizing the southwest corner with a new ramp and curb, and improving the existing traffic signal.

There is an opportunity to partner with another program:

- Yes
- No

Partnering Program:

Total Project Cost: \$ 90,000

Solution and Comments:

This review has been completed for use in the 2018 Your Voice, Your Choice: Parks & Streets process.

SDOT recommends that the southwest corner be formalized, with curb and a new curb ramp. This will improve accessibility at this intersection and help protect pedestrians at the corner. The new curb corner will be designed to accommodate Metro bus turning movements. The crosswalks will be remarked and realigned to line up with the existing and new ramps. The existing signal will also be upgraded as funding permits, potentially including new vehicle and pedestrian signal heads to meet current standards, and new accessible pedestrian signal elements.

Image:

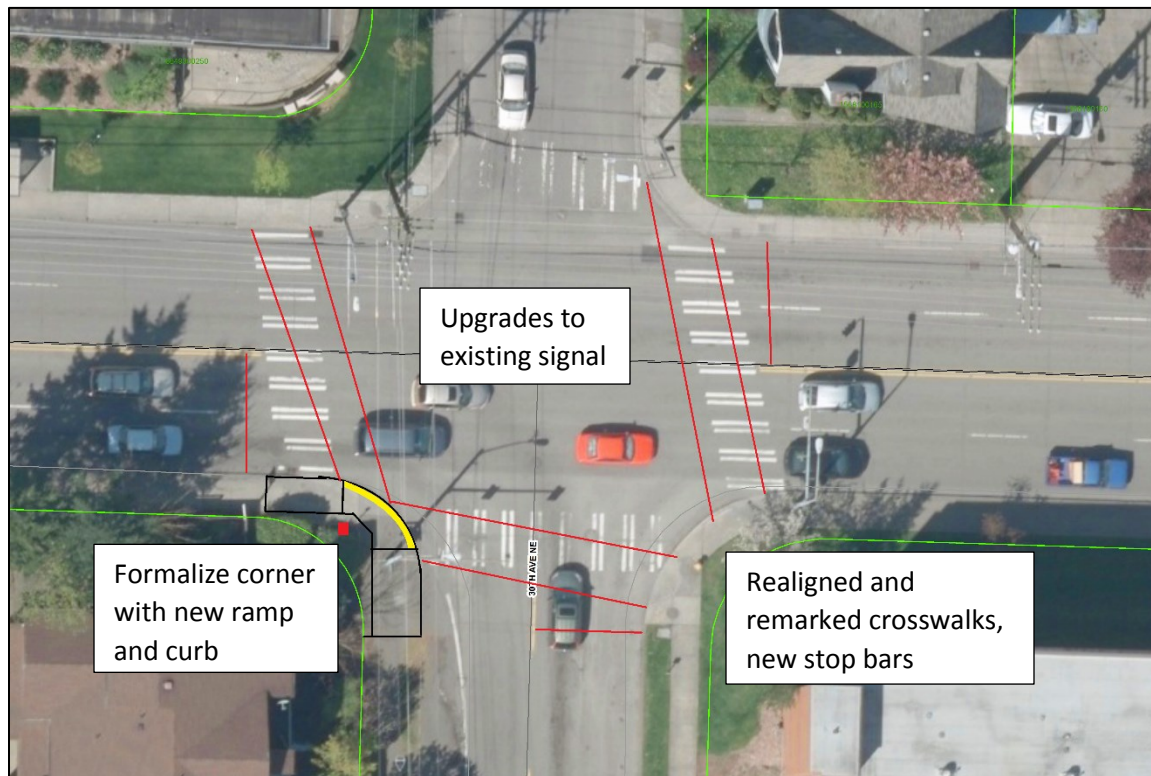


Figure 1: Proposed Improvements



Information Provided by Community Members

Project Idea: pedestrian safety, school bus stop, traffic calming

Need for Project: Especially from 7AM to 9AM on weekdays eastbound traffic on NE 145th St. rushes to turn south on 30th Ave NW. Aside from children using the crosswalk, there are also children waiting for busses at that corner. Cars frequently do not stop on the red light before the left turn, and race around when the light is green. In addition city busses (65 line) making the turn often go up over the curb.

Community Benefit from Project: school children and other pedestrians. Also, pretty many car crashes there, so them too



Risk Registry:

SDOT Review	Drainage impacts	Constructability	Community process
Medium	Medium (one inlet may need to be relocated, depending on ramp design)	High (located on principal arterial, may need WSDOT coordination)	Medium (moderate construction impacts)

Cost Estimate:

<i>Design Phase</i>	
Preliminary Engineering (Survey) Costs	\$ 2,000
Project Management Costs (City Labor)	\$ 2,000
Design Costs (Consultant Fees, if externally designed, internal labor otherwise) - use 10% of construction cost for in-house design of relative uncomplicated projects	\$ 5,000
Subtotal - Design Phase Costs	\$ 9,000
Design Contingency (10% of Design Phase Subtotal)	\$ 1,000
Total Design Phase Costs	\$ 10,000
<i>Construction Phase</i>	
Construction Costs (include urban forestry, signs & markings, traffic control, layout or construction staking as necessary)	\$ 50,000
Drainage Costs	\$ 0
Estimating Contingency (10-20%)	\$ 10,000
Subtotal - Construction Costs	\$ 60,000
Construction Management (10-25% of Construction Cost)	\$ 8,000
Construction Contingency (20%)	\$ 12,000
Total Construction Phase Costs	\$ 80,000
Total Project Cost = Total Design and Construction Phase Costs	\$ 90,000